

Furrows II / Wheat NexStep® Tile

Style#: 14669

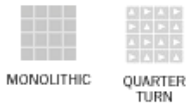
Color#: 9210

Carpet Type: Tile

Standard Size: 50 cm x 50 cm (12 ft 6 in)

Backing Options: GlasBac® RE Tile (50 cm x 50 cm), GlasBac® Tile (50 cm x 50 cm), NexStep® Tile (50 cm x 50 cm), Performance Broadloom (2 m), Sheet Goods (2 m)

Layout Options:



Specifications for NexStep® Tile

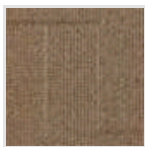
Product Number:	146699210
Product Construction:	Tufted Textured Loop
Soil/Stain Protection:	Protekt®
Antimicrobial Treatment:	(AATCC 138 Washed) (AATCC 174 Parts 2&3) Intersept®
Yarn System:	Post-Consumer Content Type 6,6 Nylon
Dye Method:	100% Solution Dye
Post-Industrial:	2% - 5%
Post-Consumer:	4%
Total Recycled Content:	6% - 9%

Product Specifications	U.S.	Metric
Tufted Yarn Weight:	17 oz/yd ²	576 g/m ²
Machine Gauge:	1/12 in	47.2 ends/10 cm
Pile Height:	.13 in	3.3 mm
Pile Thickness:	.117	3
Stitches:	8.66/in	34.09442 ends/10cm
Pile Density:	5231	
Size:	12 ft 6 in	50 cm x 50 cm

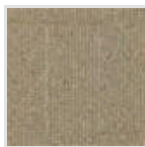
Performance Specifications

Indoor Air Quality:	Green Label Plus Certified #GLP1641
Sustainable Carpet Assessment Standard:	NSF-140 Gold
Radiant Panel:	(ASTM E-648) Class 1
Smoke Density:	(ASTM E - 662)
Lightfastness:	(AATCC 16 - E)
Static:	(AATCC - 134) < 3.5 KV

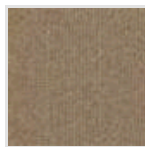
Other Colors for Furrows II



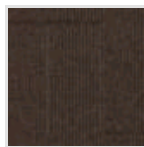
Flax
Color#: 9211



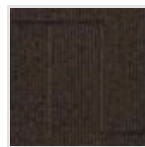
Barley
Color#: 9212



Maize
Color#: 9213



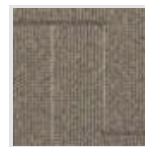
Georgia Clay
Color#: 9214



Top Soil
Color#: 9215



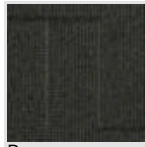
Oats
Color#: 9216



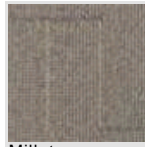
Silt
Color#: 9217



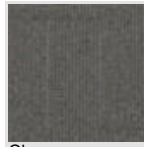
Volcanic Ash
Color#: 9218



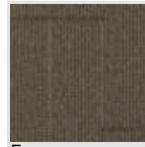
Rye
Color#: 9219



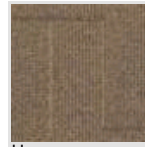
Millet
Color#: 9220



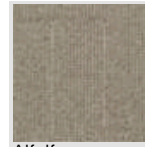
Clover
Color#: 9221



Fescue
Color#: 9222



Hops
Color#: 9223



Alfalfa
Color#: 9224



Wild Rice
Color#: 9225

All Product Specifications are averages derived from product sample testing and are subject to normal manufacturing tolerances and testing tolerances. "Tufted Yarn Weight" refers to total input weight of yarn used in tufting process, and processes such as tufting and shearing will result in a lower finished yarn weight in purchased carpet. Pile Density stated in the Product Specifications is based on the Tufted Yarn Weight. Product Specifications may be changed without notice as long as product performance is not materially affected.